

# ER-S2CM

## Vented Two Space Center Mount Rack Shelf

### Product Features:

Fits components up to 17.325" wide

Two space racking height (3.5")

Tray depth - 19"

Convenient tie down slots in front and rear of tray

Includes 10-32 and 12-24 mounting screws

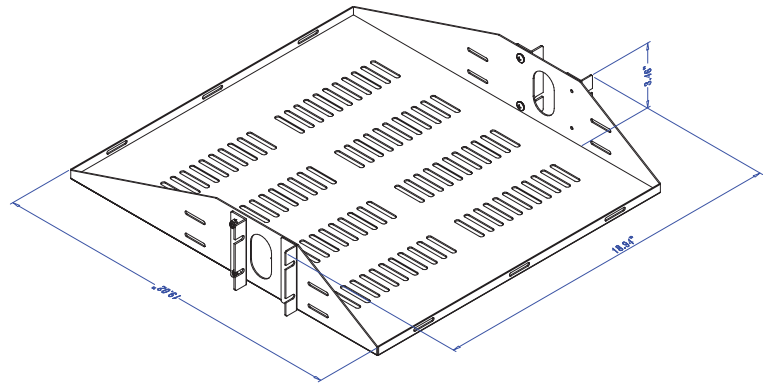
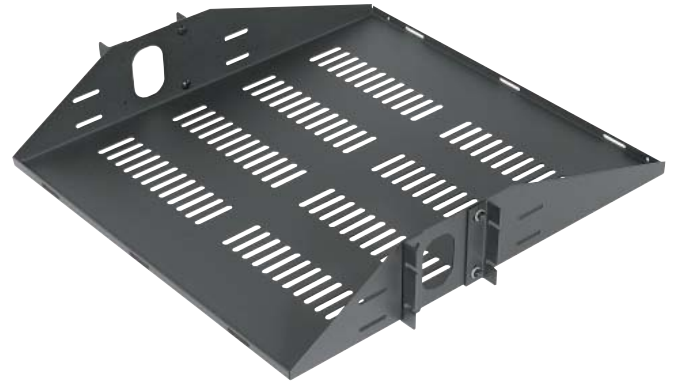
Load capacity – 50 lbs

Black powder coat finish

### Product Specifications:

*(for Architects & Engineers)*

The equipment rack shelf shall be the Video Mount Products (VMP) model ER-S2CM. The shelf shall be compatible with 19" standard telecommunications equipment racks without modification. The shelf shall fit all components up to 17.375" in width. The shelf shall be painted with a durable black static resistant powder coat finish. The load capacity shall be 50 lbs.



### Video Mount Products

345 Log Canoe Circle

Stevensville, MD 21666

Toll Free: 877.281.2169

Telephone: 410.643.6390

Facsimile: 410.643.6615

[www.videomount.com](http://www.videomount.com)

**VMP**  
VIDEO MOUNT PRODUCTS